



CreditOne  
**Charleston  
Open**



# FAN GUIDE

**CREDIT ONE CHARLESTON OPEN**



**APRIL 2 – APRIL 10, 2022**  
**CHARLESTON, SC**

**A NEW ERA IN  
TENNIS BEGINS**



# DEAR FANS,

## WELCOME TO THE 2022 CREDIT ONE CHARLESTON OPEN, CELEBRATING 50 YEARS OF EXCELLENCE IN WOMEN'S TENNIS.

We have missed you! The past three years have not been the same without our fans and a lot has changed since we last saw you in 2019. While we were apart, we made it a priority to keep the spirit of the game and our tournament alive in new ways. We produced three made-for-TV tennis events, fully renovated our stadium and made upgrades across our grounds. We can't wait for you to experience our brand new facility and enjoy all that it has to offer.

This year, we are honored to welcome Credit One Bank as the new title sponsor of our tournament. We first collaborated with their team in the summer of 2020, when we hosted the Credit One Bank Invitational, which was the very first live tennis event produced and broadcasted after the onset of the pandemic. We saw potential in a long-term partnership with Credit One Bank and knew their investment in Charleston and women's tennis would be game-changing.

Credit One Bank is generously supporting our longtime commitment of providing free tournament tickets to kids. Our ultimate goal is to grow the game of tennis by inspiring the next generation of players through our event and the world-class athletes who compete here. The future of this incredible sport is in great hands here in Charleston.

We are excited to continue our strong relationship with our partners at Volvo. They will continue as our "Official Vehicle" and you'll be able to see all of their latest technologies on display throughout the grounds. They will take ownership of our Feature Court 2, the Althea Gibson Club Court powered by Volvo. Please stop by and check out all that Volvo Cars USA has to offer!

In addition to hosting world-class tennis, we are also committed to creating a sustainable footprint moving forward. This year, all tournament refuse will be recycled by our partners at RePower South, here in Berkeley County. The plastic bottles RePower recycles are turned into sustainable apparel by Vapor Elemental, another local company, who has supplied the sustainable uniforms worn by all

our staff and volunteers. Eighteen recycled plastic bottles make one shirt. Change begins locally. Don't worry about searching for special recycling bins at the event; all materials will be collected in the same containers, then sorted and recycled at RePower South's facility right here in Berkeley County.

On the court, we have an exceptional field featuring five Grand Slam champions, four past champions and a large contingent from Team USA, including our reigning NCAA champion. They will all be competing on brand new courts brought to us by our partners at Har-Tru. The new Har-Tru Hy-Q system uses below-surface irrigation to create the ultimate clay court experience. Make sure to check out this new system at Har-Tru's demonstration court in our fan experience area.

There are so many new ways to play off the court this year, too. From new dining experiences and entertainment spaces to our merchandise tent and Interactive Fan Zone on the grounds, this year's event offers endless destinations and activities to keep you entertained between matches.

You'll also have the chance to get an insider's perspective of the tennis world with new programming. Visit with Tracy Austin and Pam Shriver during lunch and Bethanie Mattek-Sands in the afternoon at our Match Point Bar & Grill, where they will talk tennis every day on our Feature Stage. We'll also have live music and two large video boards playing all of the on-court action, so you don't miss a point!

We can't wait for you to join us for the finest experience in women's professional tennis in America's favorite city. The Credit One Charleston Open team, along with our partners and more than 500 volunteers, are here to make your visit with us special.

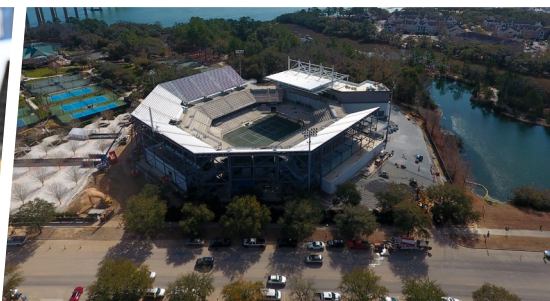
### **A NEW ERA IN TENNIS BEGINS THIS APRIL.**

See you then!

Thank you,



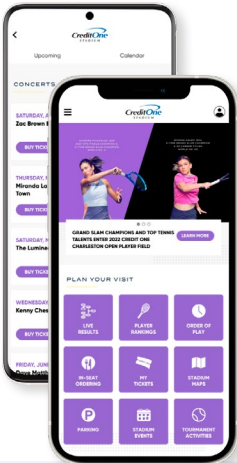
Bob Moran  
Tournament Director



# MATCH SCHEDULE

| DATE     | SESSION | GATES OPEN | START TIMES | FEATURED MATCHES  |
|----------|---------|------------|-------------|-------------------|
| SAT 4/2  | DAY     | 9:00am     | 10:00am     | Qualifying Rounds |
| SUN 4/3  | DAY     | 10:00am    | 11:00am     | Qualifying Rounds |
| MON 4/4  | DAY     | 9:00am     | 10:00am     | 1st Round         |
| MON 4/4  | NIGHT   | 5:00pm     | 7:00pm      | 1st Round         |
| TUES 4/5 | DAY     | 9:00am     | 10:00am     | 1st & 2nd Rounds  |
| TUES 4/5 | NIGHT   | 5:00pm     | 7:00pm      | 1st & 2nd Rounds  |
| WED 4/6  | DAY     | 9:00am     | 10:00am     | 2nd & 3rd Rounds  |
| WED 4/6  | NIGHT   | 5:00pm     | 7:00pm      | 2nd & 3rd Rounds  |
| THUR 4/7 | DAY     | 10:00am    | 11:00am     | 3rd Round         |
| THUR 4/7 | NIGHT   | 5:00pm     | 7:00pm      | 3rd Round         |
| FRI 4/8  | DAY     | 10:00am    | 11:00am     | Quarterfinals     |
| FRI 4/8  | NIGHT   | 5:00pm     | 7:00pm      | Quarterfinals     |
| SAT 4/9  | DAY     | 10:00am    | 11:00am     | Semifinals        |
| SUN 4/10 | DAY     | 10:00am    | 11:00am     | Finals            |

\*All match times subject to change. \*\*Doubles Final begins at 10:45am followed by Singles Final.



## DOWNLOAD THE CREDIT ONE STADIUM APP

POWERED BY VENUETIZE



The official Credit One Stadium App is your go-to source for tournament information. Get real-time match updates, review the order of play, read tournament news and learn more about your favorite players. Use the App to explore the stadium's site map, where you'll find locations for cocktails, merchandise and more. The App also includes access to your digital tickets.

**IN-SEAT FOOD AND BEVERAGE ORDERING IS AVAILABLE THROUGH THE APP EXCLUSIVELY FOR PREMIUM LEVEL TICKET HOLDERS.**

\*App will be available for download on April 1

## DANIEL ISLAND FERRY

If you're traveling to the tournament from downtown, catch the Daniel Island Ferry and enjoy a scenic waterway ride to the event. Ferries will loop from downtown Charleston to Daniel Island for tennis-goers to catch day or night matches at the stadium.

For a full schedule and to purchase tickets, visit [diferry.com](http://diferry.com) or call (843) 732-4949.





# EXPERIENCE THE NEW CREDIT ONE STADIUM

For the past two years, the Credit One Stadium has undergone exciting and extensive renovations to enhance the on-site experience for our tennis and concert patrons, players and performers and all who will enjoy future events with us.

## STADIUM IMPROVEMENTS INCLUDE:

### » PERMANENT HOSPITALITY SUITES

These fully conditioned suites include premium hospitality amenities and services with access to private patios, kitchen facilities, bathrooms and more.

### » STAGE HOUSE & VIP CLUB

This new space will house player wellness facilities, media and back-of-house operations, as well as a VIP Club overlooking Center Court.

### » NEW DINING & DRINK DESTINATIONS

- Grab & Go Seven Farms Market
- Kim Crawford Bar
- Mac & Sweets
- Michelob Ultra Lounge
- Moët Baseline Lounge
- Spirit Bars
- Swig & Swine BBQ

### » 130% INCREASED RESTROOMS

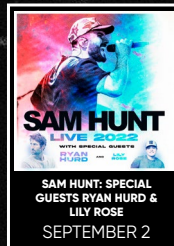
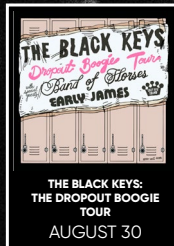
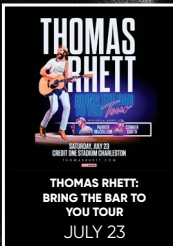
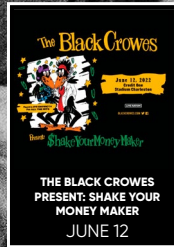
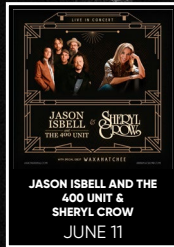
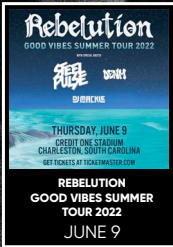
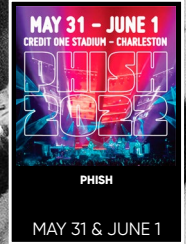
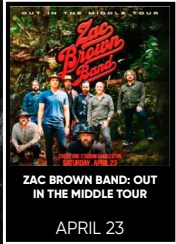
### » CARD & MOBILE PAYMENT VENUE

For patrons who have cash on-site, reverse ATMs will be located on the concourse level of the stadium for your convenience.



# ROPER ST. FRANCIS HEALTHCARE

## 2022 CONCERT SERIES



# ANNOUNCING MORE SOON!

GET YOUR TICKETS AT [TICKETMASTER.COM](https://www.ticketmaster.com)

**CreditOne**  
STADIUM



# WEEKLY ACTIVITIES

AT THE CREDIT ONE CHARLESTON OPEN

## INTERACTIVE FAN ZONE

**SAT, APRIL 2 – SUN, APRIL 10**

Adults and kids are welcome to stop by the Interactive Fan Zone and put their tennis skills to the test. Challenge your friends or family to see who has the faster serve or test your ball kid skills at the Ball Kid Challenge.

## THE DRAW

**SAT, APRIL 2**

**3PM - 4PM**

Be the first to know the match ups of the 2022 Credit One Charleston Open! The Draw will be conducted at the Match Point Bar & Grill. Two players will be in attendance, so be sure to stop by, say hello and snag a photo!

## FAMILY WEEKEND

**SAT, APRIL 2 – SUN, APRIL 3**

Presented by MUSC Health

Bring the whole crew out for two fun-filled days during our qualifying rounds. The weekend will offer a variety of family friendly activities, including jumbo-sized games, face painting, photo booths and more! Make sure kids also stop by and challenge your family at the Interactive Fan Zone. On behalf of MUSC Health, Family Weekend admission is free for kids 16 and under, and adults are only \$10.

## PICKLEBALL CLINICS

**SAT, APRIL 2 – WED, APRIL 6**

**9AM - 4PM**

In Partnership with Short Court Sports

Come out to enjoy the fastest growing sport in the US, pickleball. Our staff instructors will be providing clinics for all ages and levels. Short Court Sports will be on-site to demonstrate their latest paddles as well as offer a daily exhibition for all spectators to enjoy.





# WEEKLY ACTIVITIES

AT THE CREDIT ONE CHARLESTON OPEN

## TALKING TENNIS WITH TRACY AND PAM

**SAT, APRIL 2 - FRI, APRIL 8** | 12PM - 1PM

**SAT, APRIL 9 - SUN, APRIL 10** | 11AM - 12PM

Join former World No. 1 Tracy Austin and former World No. 3 Pam Shriver as they host the brand new series, 'Talking Tennis with Tracy and Pam' at the Match Point Bar & Grill's Feature Stage. The daily show will feature live, on-site interviews with top players and coaches, giving Credit One Charleston Open fans an inside look into the journeys, successes and struggles that shaped each player into the power forces they are today on the WTA.

## FROM THE BASELINE WITH BETHANIE MATTEK-SANDS

**SAT, APRIL 2 - FRI, APRIL 8** | 3PM - 4PM

**SAT, APRIL 9 - SUN, APRIL 10** | 12PM - 1PM

Fan-favorite Bethanie Mattek-Sands will be taking over the Feature Stage at the Match Point Bar & Grill for daily conversations with some of her good friends and fellow players. Known for her sense of humor and spontaneous spirit, afternoons with Bethanie at the Credit One Charleston Open are guaranteed to be entertaining, interactive and a good time.

## LCTA NIGHT

**MON, APRIL 4**

7PM - 10PM

The Credit One Charleston Open invites all Lowcountry Tennis Association (LCTA) members to our first-ever Monday Night Session. We will be honoring LCTA captains throughout the evening, to recognize their efforts and support of the greater Charleston tennis community. Keep an eye out during the start of the second match for a special coin toss, assisted by an LCTA member. LCTA members who purchase tickets will also be entered to win Dunlop's latest edition Tennis Racket and Tennis Bag.

## MILITARY APPRECIATION NIGHT

**THURS, APRIL 7**

5PM - 10PM

Presented by Boeing

On behalf of Boeing, the Credit One Charleston Open is proud to offer complimentary admission to active-duty, retired military and their families. Join us in thanking and celebrating our service members with a special program designed for and dedicated to them.

SOCIAL MEDIA AT THE OPEN

## STAY CONNECTED

While on-site, keep up with the happenings on other courts and around the grounds by following the Credit One Charleston Open on social media. Snap a selfie and share what you're experiencing at the tournament! You just may end up on our jumbotron and social channels!



/CREDITONECHARLESTONOPEN



@CREDITONECHARLESTONOPEN



@CHARLESTONOPEN



# DINING & LIBATIONS

AT THE OPEN



## NIGHTLY HAPPY HOUR

4PM - 6PM

Enjoy daily drink specials and live acoustic music from local acts, including Me and Mr. Jones, Matt MacKelcan Duo, Lauren Hall Duo, New Ghost Duo, Brotherman, Eric Vaughn and Jasmine Commerce, at the Match Point Bar & Grill's Feature Stage.

### CHARLESTON COLLECTIVE

Find local favorites, all in one convenient location. Enjoy dishes from Charleston-based restaurants, including salads from Verde, Orlando's Pizza, Swig & Swine BBQ and our own chef-inspired Baseline Burrito Bowls.

### THE OAKS

The perfect spot to relax under beautiful Oak trees and enjoy the breeze. Stop and grab a drink from one of the bars on your way over, including a fan favorite Frozé, Moët & Chandon champagne and a refreshing wine selection from Kim Crawford.

TRY THE NEW

### CREDIT ONE CHARLESTON OPEN TOURNAMENT COCKTAIL

#### THE FIRST SERVE

Butterfly Pea Flower vodka and lemonade on ice, topped with club soda and garnished with a lemon.

### MATCH POINT BAR & GRILL

The Match Point Bar & Grill is a new outdoor lounge featuring BBQ by award-winning Braised in the South restaurant. Menu items include chicken flatbreads, crab cake sandwiches and more. While here, enjoy a full bar experience with our tournament cocktails, Kim Crawford wines and refreshing craft beers by New Realm Brewing.

### CLUB COURT CAFE

Our Club Court Cafe will feature hot coffee, classic blends and grab-and-go canned cold brews from local favorite King Bean Coffee Roasters.







## IN STADIUM CONCESSIONS

### SWIG & SWINE BBQ

Featuring house-smoked meats, Swig & Swine is a Lowcountry staple for barbecue and southern eats. Led by pitmaster Anthony DiBernardo, each order is slow-cooked to perfection in custom smokers that use only wood to fuel the fire 24/7.

### SPIRIT BARS

Two full bar locations on the Northeast and Northwest concourse feature a full selection of spirits at your convenience. Grab a classic cocktail or try our featured tournament cocktail.

### KIM CRAWFORD BAR

This year, fans can enjoy the fresh and vibrant flavors of Kim Crawford wines. Sip on a glass of Sauvignon Blanc or Rosé while taking in a match. Find Kim Crawford beverages, available at all stadium bars.

### MICHELOB ULTRA LOUNGE

Enjoy a crisp cold one at the Michelob Ultra Lounge. Take a break and enjoy the stadium shade with a Michelob Ultra in hand. Grab a slice while you're here - Orlando's Pizza will be located inside.

### MÖET BASELINE LOUNGE

Our premium ticket holders can enjoy Möet & Chandon's most loved line of champagne in the brand new Möet Baseline Lounge. Located at the southend of the stadium, in front of the Stage House, this lounge provides a relaxing, shaded space for 100-level ticket holders to sip on champagne while watching matches.

### GRAB & GO SEVEN FARMS MARKET

On the move to catch the latest action on court? Stop by the new Grab & Go Seven Farms Market for the fastest service on-site! This in stadium location will feature packaged snacks and food items, as well as ready-to-drink cocktails, canned craft beer and a selection of Coca-Cola beverages.





# MEET THE CHEF

## CHEF KIMBERLY BROCK BROWN

CEPC, CCA, AAC

PRESIDENT, AMERICAN CULINARY FEDERATION

EXECUTIVE CHEF OF THE CREDIT ONE CHARLESTON OPEN

We are proud to welcome Chef Kimberly to the Credit One Charleston Open!

Chef Kimberly Brock Brown has more than 30 years of experience in the culinary industry as a certified executive pastry chef, culinary instructor, culinary competitor, entrepreneur, author and TV personality. The Chicago native and longtime Charleston resident has also been an active member of the American Culinary Federation (ACF) for more

than three decades. She currently serves as the ACF president and was the first female chef of color and first pastry chef to be elected for the position in the organization's 93-year history. Chef Kimberly remains dedicated to supporting women, minorities and other members of the culinary community and beyond.

Chef Kimberly describes her cooking philosophy as 'good looking food, tastefully prepared' and enjoys using the freshest ingredients possible to provide exceptional dining experiences. Her team will be offering a wide selection of tantalizing tidbits at this year's tournament, including a mix of seasonal dishes, local favorites, international flavors and stadium classics.



## IN-SEAT ORDERING IS BACK!

Download the Credit One Stadium App to order a special selection of food and drinks right to your seat! This exclusive service is only available for premium ticket holders.



16 OZ. TERVIS + LID: **\$25**

24 OZ. TERVIS + LID: **\$30**

## 2022 CREDIT ONE CHARLESTON OPEN SOUVENIR CUPS

Purchase our limited-edition 50th year souvenir Tervis Tumblers from select bars and concessions stands on-site. Enjoy complimentary fountain soda and water refills at all stadium concourse concession stands. The souvenir cup design will change each day and feature past champions Rosie Casals, Tracy Austin, Jennifer Capriati, Martina Hingis, Venus Williams, Steffi Graf, Martina Navratilova, Serena Williams and Chris Evert.

ADD TO YOUR  
COLLECTION!

*Must  
have!*

# 2022 PLAYER FIELD HIGHLIGHTS



## IGA SWIATEK

POLAND

2020 ROLAND GARROS CHAMPION

**BEST RANKING: WORLD NO. 4**

🇵🇱 FIRST TIME APPEARANCE IN  
CREDIT ONE CHARLESTON OPEN FIELD

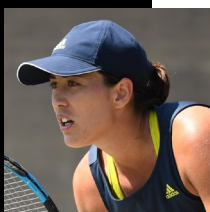


## PAULA BADOSA

SPAIN

2021 BNP PARIBAS OPEN CHAMPION

**BEST RANKING: WORLD NO. 4**

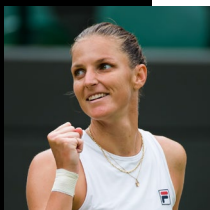


## GARBIÑE MUGURUZA

SPAIN

2-TIME GRAND SLAM CHAMPION  
& 2021 WTA FINALS CHAMPION

**BEST RANKING: WORLD NO. 1**

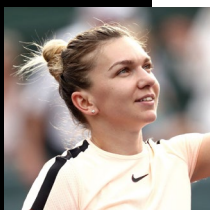


## KAROLINA PLISKOVA

CZECH REPUBLIC

2021 WIMBLEDON FINALIST & 16 CAREER TITLES

**BEST RANKING: WORLD NO. 1**



## SIMONA HALEP

ROMANIA

2-TIME GRAND SLAM CHAMPION & 23 CAREER TITLES

**BEST RANKING: WORLD NO. 1**

🇷🇴 FIRST TIME APPEARANCE IN  
CREDIT ONE CHARLESTON OPEN FIELD

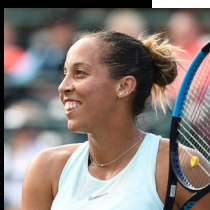


## DANIELLE COLLINS

UNITED STATES

2022 AUSTRALIAN OPEN FINALIST

**BEST RANKING: WORLD NO. 10**



## MADISON KEYS

UNITED STATES

2019 CHARLESTON OPEN CHAMPION

**BEST RANKING: WORLD NO. 7**

# 2022 PLAYER FIELD HIGHLIGHTS



## SLOANE STEPHENS

UNITED STATES

2016 CHARLESTON OPEN CHAMPION  
& 2017 US OPEN CHAMPION

**BEST RANKING: WORLD NO. 3**

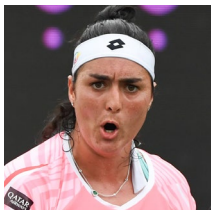


## PETRA KVITOVA

CZECH REPUBLIC

2011 & 2014 WIMBLEDON CHAMPION

**BEST RANKING: WORLD NO. 2**

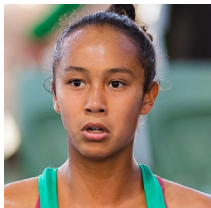


## ONS JABEUR

TUNISIA

2021 BIRMINGHAM CHAMPION

**BEST RANKING: WORLD NO. 7**



## LEYLAH FERNANDEZ

CANADA

2021 & 2022 MONTERREY OPEN CHAMPION

**BEST RANKING: WORLD NO. 19**



## BELINDA BENCIC

SWITZERLAND

2021 OLYMPIC GOLD & SILVER MEDALIST

**BEST RANKING: WORLD NO. 4**

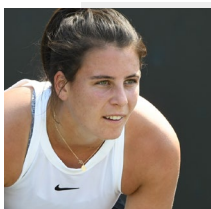


## SHELBY ROGERS

UNITED STATES

2020 US OPEN QUARTERFINALIST  
& CHARLESTON NATIVE

**BEST RANKING: WORLD NO. 36**



## EMMA NAVARRO

UNITED STATES

2021 NCAA NATIONAL SINGLES CHAMPION  
& CHARLESTON NATIVE

**BEST RANKING: WORLD NO. 1**

(INTERCOLLEGIATE TENNIS ASSOCIATION)

**COMPLIMENTARY SPECTATOR PARKING  
& SHUTTLE SERVICE**

## SHUTTLE SCHEDULE

**Visit [creditonecharlestonopen.com](http://creditonecharlestonopen.com) for gate times.**

100 BENEFITFOCUS WAY  
CHARLESTON, SC 29492



Guests are encouraged to use the Publix Shopping Center as a drop-off/pick-up point for all rideshare and taxi services.



# TOURNAMENT INFORMATION & REMINDERS

## FOOD & BEVERAGES

The Credit One Charleston Open has a variety of choices for your dining pleasure. With the exception of one unopened bottle of water per person, no food or beverage will be admitted into the event.

## NO SMOKING POLICY

The Credit One Charleston Open is a non-smoking facility. Smoking, including e-cigarettes, is not permitted anywhere on the tournament grounds.

## MATCH SCHEDULE

Please keep in mind that match times are subject to change due to weather, television coverage or other delays. Check [creditonecharlestonopen.com](http://creditonecharlestonopen.com) or the app for updates.

## CAMERAS

No flash photography is allowed. Cameras are prohibited for any purpose other than using photographs for personal and private domestic use. Such photographs cannot be exploited or displayed in any manner or in any medium whatsoever without the express written consent of the WTA.

## LOST & FOUND

Lost and Found is located at Guest Services, which is near the front steps of the stadium. The Credit One Charleston Open, its owner and the owner's affiliates, agents and employees are not responsible for lost or stolen articles.

## TICKET POLICIES

Please be prepared to present your digital ticket to our usher staff. Patrons wanting to leave and re-enter the tournament grounds will need to obtain a hand stamp or have your ticket exit scanned. No ticket or credential holder may continually collect, disseminate, transmit, publish or release from the grounds of the tournament any match scores or related statistical data during match play (from the commencement of a match through its conclusion for any commercial, betting or gambling purposes).

## REFUNDS/EXCHANGES

There are no refunds or exchanges. All sales are final.

## RAIN POLICY

The following policy applies to individual session tickets purchased directly (and not via ticket auction, exchange, resale, or other secondary ticket outlet) through Ticketmaster, [creditonecharlestonopen.com](http://creditonecharlestonopen.com) or in person at Guest Services located at the main entrance. Please note that this policy does not apply to weeklong subscription, or any tickets issued on a Complimentary or Trade basis. If a session is canceled and no matches are completed, tournament management will make every effort to reasonably accommodate the individual session ticket holder on a subsequent session, if held. The Credit One Charleston Open cannot guarantee

ticket availability, exchange of equal value or comparable seat location. There will be NO REFUNDS OR CREDITS. If one match is completed on Stadium Court, a session is considered complete, and no exchanges or refunds will be made. In addition, patrons are advised that the Credit One Charleston Open schedule of play is subject to change for all sessions. Tickets are not eligible for refund or exchange due to one or more changes in the schedule of play. Please note: Information on scheduling changes can be obtained by visiting our website's homepage.

## PARKING

Parking is available in several locations on Daniel Island. Free shuttle service to the main entrance will be provided for those parking only in the satellite lots.

## ADA ACCESSIBLE SEATING

ADA seating areas require an ADA seat ticket, which can be purchased from Ticketmaster.com or by calling 843-856-7900. Handicap parking is available. Present your state-issued license plate or hangtag to parking attendants and they will direct you.

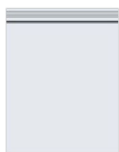
## CLEAR BAG POLICY

For the comfort and safety of all patrons, we are implementing a clear bag policy. Below shows what items are accepted at the tournament.



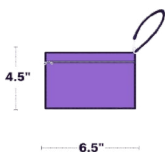
**CLEAR TOTE**

PLASTIC, VINYL OR PVC  
DO NOT EXCEED 12" x 6" x 12"



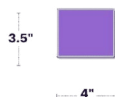
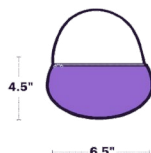
**PLASTIC STORAGE BAG**

1 GALLON  
RE-SEALABLE, CLEAR



**SMALL CLUTCH BAG**

APPROXIMATELY THE SIZE OF A HAND WITH OR WITHOUT A HANDLE OR STRAP NO LARGER THAN 4.5" X 6.5"



# SPONSORS

## TITLE SPONSOR

---



## PREMIER LEVEL

---

Charleston Area Convention and Visitors Bureau

Boeing

Har-Tru

Jersey Mike's

Volvo Cars USA

## CORPORATE LEVEL

---

Dunlop

LoopIt

Michelob Ultra

MUSC Health

Southern Tide

South Carolina Department of Parks, Recreation & Tourism

Synchronicity

USTA South Carolina

## MEDIA PARTNERS

---

Tennis Channel

The Post and Courier

## HOTEL PARTNERS

---

The Charleston Place

## OFFICIAL SUPPLIERS

---

Coca-Cola

Kim Crawford

Moët & Chandon

New Realm Brewing

Southern Eagle Distributing

## GENERAL TOURNAMENT INFORMATION:

843.856.7900 // [creditonecharlestonopen.com](http://creditonecharlestonopen.com)

## QUESTIONS OR COMMENTS ON-SITE:

Please visit Guest Services.

Simona Halep photo - Matthew Stockman/Getty Images  
Iga Swiatek, Karolina Pliskova & Leylah Fernandez photos - Jimmie48 Tennis Photography